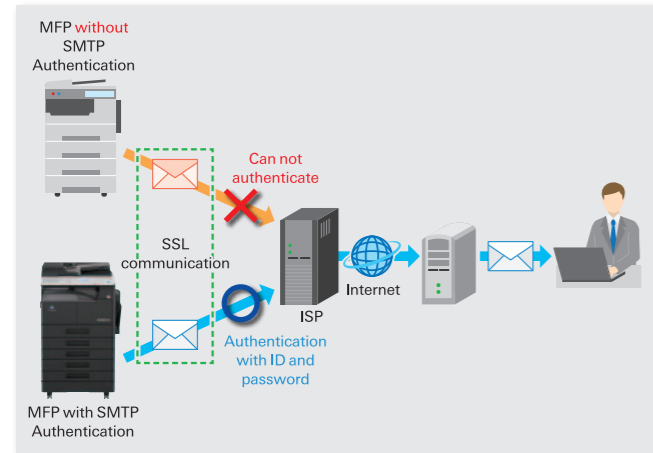


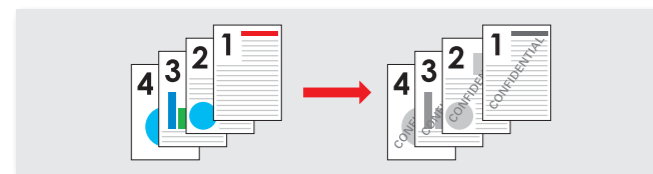
## Advanced Security Features to Protect Valuable Information

### SMTP Authentication : For companies do not own E-mail server

To support SMTP authentication which permits sending e-mail to users authenticated by the SMTP server. E-mail servers and ISPs (Internet Service Providers) etc. which are set for SMTP authentication can be used. Connection to an SMTP server allows SSL communication, so E-mail can be sent in a security-conscious state. This is suitable for small offices and other situations without a private E-mail server.



### Water Mark : Manage the organization of confidential documents with signatures

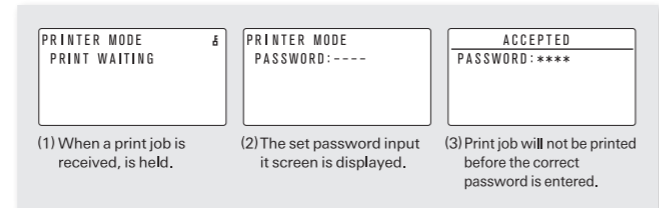


Different types of Watermarks can be added on the documents based on the purpose or importance level of documents.

### Security Print : To manage print with password

Even when a print job is executed, the MFP will not print until password has been input.

<Password Input screen>



### Account Track : For better user management

The MFP can be set to request a 3-digit account number to use the Copy feature. To restrict users who are not authorized to use the MFP. Also, numbers of copies made under each account can be tracked.



# bizhub 306/266

# A3



## bizhub 306/266

<b>306</b> B&W 30 ppm	<b>266</b> B&W 26 ppm	<b>B&amp;W</b> A3	<b>RADF</b> 46 opm	<b>RADF</b> 20 opm	<b>Network</b> Interface Card	<b>Auto</b> Duplex Unit	<b>PCL</b> Controller with NIC
<b>Scan</b> to USB	<b>Print</b> from USB	<b>Wireless</b> LAN Support	<b>Internet</b> Fax	<b>Fax</b>			
		*1	*1	*1			*1*2

\*1Optional \*2150 dpi

Model shown is 266 with options.

For more information please visit the bizhub website at

[http://www.biz.konicaminolta.com/bw/306\\_266/index.html](http://www.biz.konicaminolta.com/bw/306_266/index.html)

Product appearance, configuration and/or specifications are subject to change without notice. This product is not available for some countries or regions.

The KONICA MINOLTA logo, symbol mark, "Giving Shape to Ideas", bizhub, Simitri and their respective logos are registered trademarks or trademarks of KONICA MINOLTA, INC.

Linux is a registered trademark of Linus Torvalds in the United States and other countries. Red Hat is a registered trademark of Red Hat, Inc. in the United States and other countries. SUSE is a registered trademark of Novell, Inc. in the United States and other countries.

All other brands and product names are registered trademarks or trademarks of their respective companies or organisations.

**KONICA MINOLTA, INC.**

2-7-2 Marunouchi Chiyoda-ku, Tokyo, Japan  
<http://www.biz.konicaminolta.com>

### Ecology & Environment

KONICA MINOLTA products are designed with the environment in mind.

- Energy Star
- RoHS Compliance
- WEEE Compliance
- Eco-friendly Toners
- Production at ISO Certified Factories
- Blue Angels



### Requirements for safe use

- Please read and follow the instruction manual to ensure safe operation.
- Only operate using appropriate power supply and voltage.
- Connecting the earth wire to an inappropriate place may cause explosion or electric shock. Please connect accordingly (Taiwan and the Philippines only).

306 BW 30 PPM

266 BW 26 PPM

Giving Shape to Ideas

